

## What are the benefits of becoming an AHEC Scholar?

- \$500 Participation Award upon completion of Year one requirements and an additional \$500 Participation Award upon completion of Year two requirements; requirements to include but not limited to completion of NAO survey and program year-end survey.
- Opportunities to participate in training programs designed for clinic staff and providers.
- Increased understanding of attitudes, such as mistrust, subconscious bias, and stereotypes which practitioners and patients may bring to patient encounters.
- Heightened awareness of the existence and magnitude of health disparities, including the multi-factorial causes and the many solutions required to diminish or eliminate them.
- Skills to effectively communicate and negotiate across cultures, languages, and literacy levels, including the use of key tools to improve communication.
- Certification as a TN AHEC Scholar, which sets the student apart in an increasingly competitive work environment.
- Information about Loan Repayment Programs.
- Opportunity to become part of a network of current and future leaders in health care.

Additional information about the TN AHEC Scholars Program can be found online at <https://tnahec.org/>

The TN AHEC is supported by the Health Resources and Services Administration (HRSA) of the U.S. Department of Health and Human Services (HHS), under Grant Award No. U77HP03040-27-00. The contents are those of the author(s) and do not necessarily represent the official views of, nor an endorsement, by HRSA, HHS or the U.S. Government.



## Contact Information TN Program Offices

**Paul Juarez, Ph.D.**

Professor and Vice-Chair of Research  
Principal Investigator/Program Director

**Natasha Yokley, MSPH**

Director, TN AHEC/Maternal Health  
Meharry Medical College  
1005 Dr. D.B. Todd Jr. Boulevard Nashville, TN 37208  
Telephone: 615.327.5784  
Fax: 615.327.5634  
Email: [nyokley@mmc.edu](mailto:nyokley@mmc.edu)

### TN Program Centers

**Rosalind Shelton Drummond**

Regional Manager  
Matthew Walker Comprehensive Health Center  
Central TN AHEC  
Telephone: 615.324.9669  
Email: [rdrummond@mwchc.org](mailto:rdrummond@mwchc.org)

**McCaa Russum, MHA**

Regional Manager  
Christ Community Health Services  
West TN AHEC  
Telephone 901.842.3104  
Email: [mccayrussum@christchs.org](mailto:mccayrussum@christchs.org)

**Laura Porter, Ph.D.**

Regional Manager  
Cherokee Health Systems—East TN AHEC  
Telephone: 865.947.6220  
Email: [laura.porter@cherokeehealth.com](mailto:laura.porter@cherokeehealth.com)

**Nicole Coleman, MAJ**

Regional Manager  
Cherokee Health Systems—Southeast TN AHEC  
Telephone: 423.266.4588 Ext. 2538  
Email: [nicole.coleman@cherokeehealth.com](mailto:nicole.coleman@cherokeehealth.com)



# Tennessee

## Area Health Education Center (AHEC) Scholars Program

The TN AHEC Scholars Program seeks to develop, prepare, and sustain a culturally competent health care workforce that is prepared to deliver high quality care in a transforming health care delivery system, with emphasis on training rural and underrepresented minority, and educationally disadvantaged students for practice in rural and/or underserved areas.



## TN AHEC Scholars Program

The Tennessee Area Health Education Center (TN AHEC) at Meharry Medical College sponsors the TN AHEC Scholars Program in collaboration with each of the four regional Tennessee AHECs:

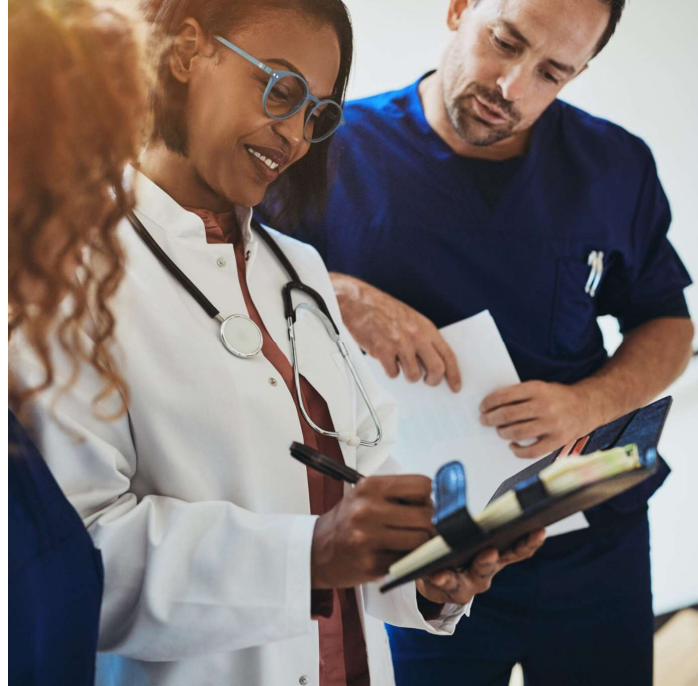
- West, TN
- Central, TN
- East, TN
- Southeast, TN

The TN AHEC Scholars Program is part of a national initiative that aims to prepare Tennessee's future health care workforce to become leaders in the transforming health care delivery system.

This program focuses on developing a culturally, competent healthcare workforce, with emphasis on training rural and underrepresented, minority and educationally disadvantaged students for practice in rural and/or underserved communities.

The AHEC Scholars Program is designed for health professions students who are entering their last two years of training, except medical, dental, and pharmacy students who may enroll in years 1-3.

TN AHEC's goal is for 80% of AHEC Scholars placed in rural and urban medically underserved areas (RUMUAs) to be retained at the end of the Scholar's Program.



### The AHEC Scholars Curriculum

The curriculum includes a defined set of clinical, didactic, and community-based training activities (40 hours didactic and 40 hours clinical training per year).

It is designed to promote knowledge and skill in providing culturally competent care and health equity through didactic and experiential learning. Training experiences will be team-based and include a formal, didactic component that addresses eight core topic areas:

1. Interprofessional Education
2. Behavioral Health Integration
3. Social Determinants of Health
4. Cultural Competency
5. Practice Transformation
6. Current and Emerging Health Issues
7. Virtual Learning and Telehealth
8. Connecting Communities and Supporting Health Professionals

## Scholars Program Goals

- Prepare at least 15 students in each of the four regional AHECs for practice in primary care in rural and/or underserved areas in Tennessee.
- Provide didactic training on HRSA's core topics key to effective practice in a transforming health care delivery system.
- Provide interdisciplinary, team-based clinical training experiences for health professions students.

### Eligibility

- Have at least two years remaining in their health professions program.
- Be in good academic standing in a graduate level health professions program (e.g., medicine, dentistry, nursing, social work, physician assistant, public health, psychology, nutrition, and pharmacy).

Students interested in the AHEC Scholars program should visit: <https://formstack.io/0FC83> to complete the AHEC Scholars application.

All applicants must submit at least one letter of recommendation. Please have your recommender visit: <https://formstack.io/66718>.

